

SNAP•A•GELTM
**PRECAST
GELS**



500+ Options
Superior Performance

“Get Results in a Snap”

**Save Time
& Money!**

MINI SNAP-A-GELS™

Fast Run Times!

The mini size Snap-A-Gels run in 45 to 60 minutes, while competitive gels run in 90 to 120 minutes.

Results!

Snap-A-Gels are produced from only the highest-quality, electrophoresis-grade chemicals. They are cast by skilled lab technicians and are performance verified by a rigorous quality control process before being shipped to your lab. Get results the first time with high-speed, high-resolution Snap-A-Gels!

Fast Staining and Blotting!

Jule's 0.75mm thick gels stain and destain faster and transfer (blot) better than thicker gels.

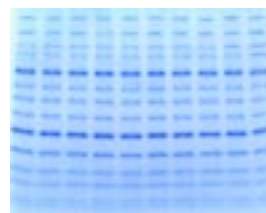
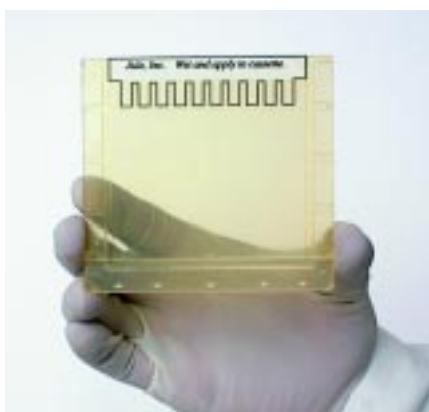
Easy-to-See Sample Wells!

Snappy-Load Decal™ shows exact location of sample wells for easy sample loading.

Universal Cassette

Mini Snap-A-Gels fit most popular electrophoresis apparatuses.

Snap-A-Gel UNIVERSAL CASSETTES



Mini Snap-A-Gel Compatibility Chart

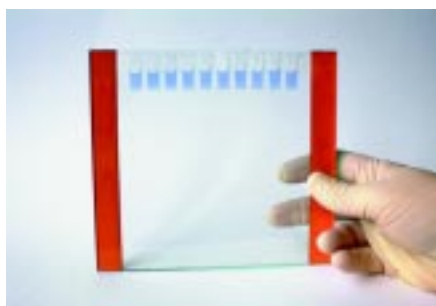
Manufacturer	Model	Compatible?
Amersham-Pharmacia-Hoefer	SE250, SE260 Mighty Small	✓ Yes
BioRad Corporation	Mini Protean II™ & III™	✓ Yes
Invitrogen-Novex	XCell I & II, Sure Lock™	✓ Yes
EC Apparatus-Thermo	EC-120™	✓ Yes
CBS Scientific	MGV-302™	✓ Yes
Owl Scientific	Penguin™	✓ Yes
Owl/ISS/Enprotech™	ISS Enprotech unit	✓ Yes, one gel only



LARGE SIZE PRECAST GELS

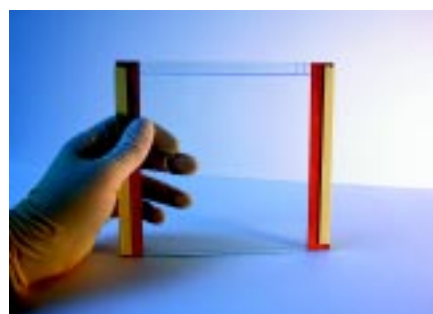
Fits Hoefer (Amersham-Pharmacia-Hoefer) apparatus models SE400, SE600, Ruby SE600, SE650 and SE700

- 16cm tall x 18cm wide glass cassette
- 0.75mm or 1.50mm gel thickness
- 2, 10, or 15 sample wells
- Tris Glycine, TBE, TBE-Urea and Tris Tricine buffer systems



1D GELS

**Save Time!
Get Results!
Increase Productivity!**

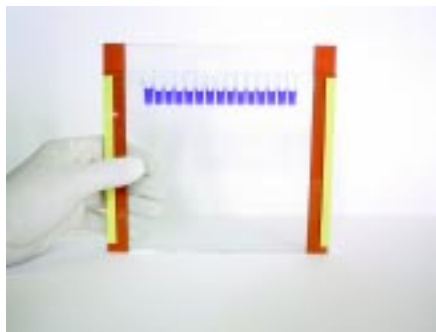


2D GELS

2D gels are poured to within 1cm from top of the cassette. A small sample well for standards and space for a 13cm IEF tube gel or IPG Strip are provided.

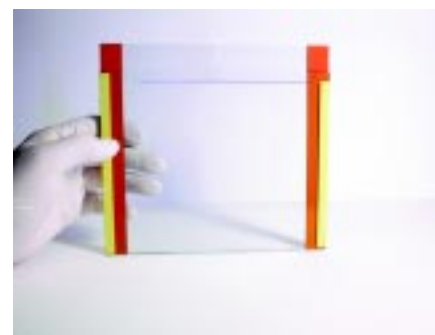
Fits BioRad Protean Ixi Apparatus.

- 16cm tall x 20cm wide front plate, 18.3cm tall x 20cm wide back plate
- 0.75mm or 1.50mm gel thickness
- 2, 10, or 15 sample wells
- Tris Glycine, TBE, TBE-Urea and Tris-Tricine buffer systems



1D GELS

**Save Time!
Get Results!
Increase Productivity!**



2D GELS

2D gels are poured to within 1cm from top of the cassette. A small sample well for standards and space for a 15cm IEF tube gel or IPG Strip are provided.

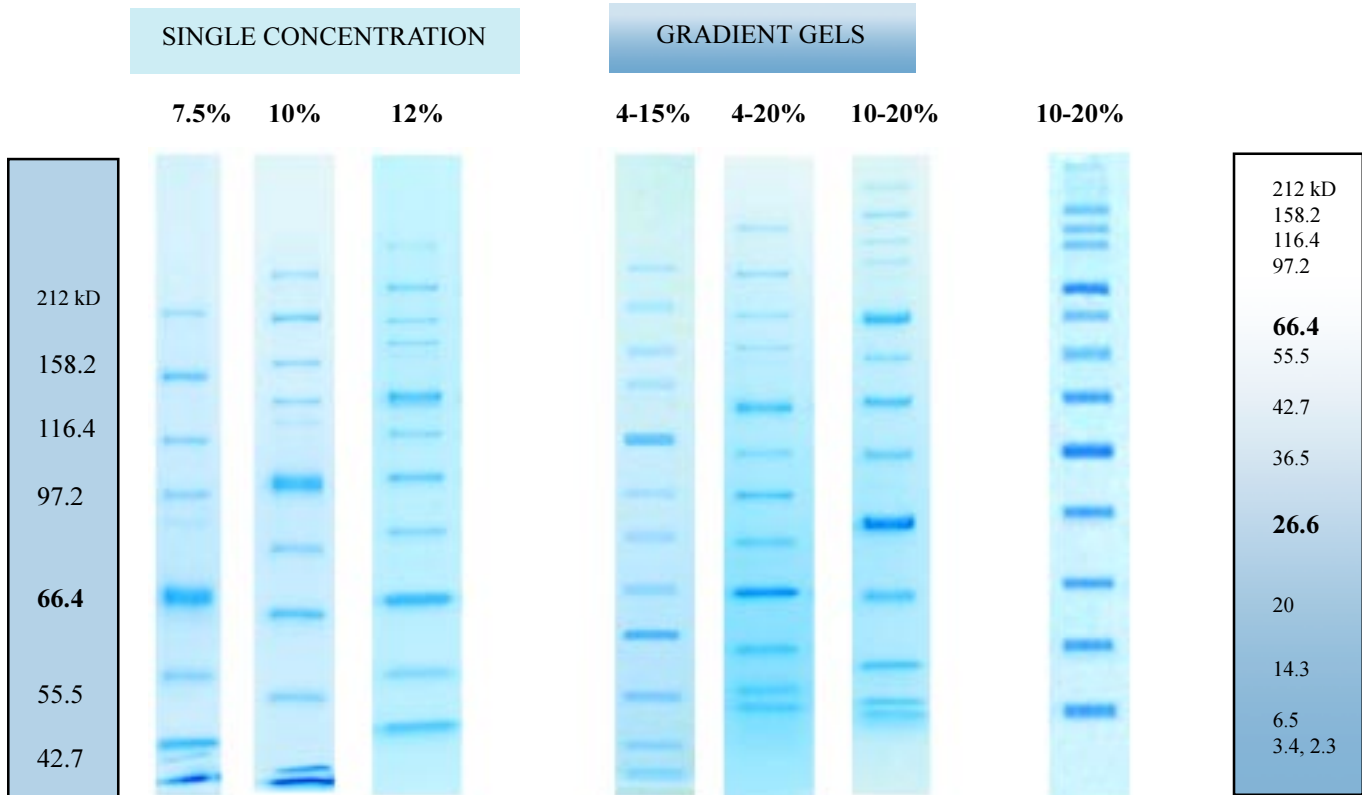
See ordering information on back pages.

SELECT THE BEST GELS FOR YOUR SAMPLES

Use the sample gels below to select the acrylamide concentration best suited for your sample. Choose a lower acrylamide concentration for separating large proteins, or a higher concentration for smaller proteins. Choose gradient gels when the sample has a broad range of proteins. Gradient gels also tend to provide sharper bands. Examples below apply to both mini and large size gels, except the distance between bands will be greater using large size gels.

TRIS GLYCINE GELS

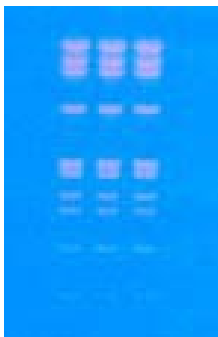
TRICINE



The sample that was separated on each gel above had 13 protein bands, which ranged in size (Daltons) as follows: 212,000 (top of gel); 158,194; 116,351; 97,184; **66,409**; 55,561; 42,710; 36,487; **26,625**; 20,040; 14,313; 6,517; and 3,400-2,340 (Insulin A, B chain) Daltons. **Two bands at 66,400 and 26,600 Daltons are double intensity in order to serve as reference points.** The gel buffer is 0.375 M Tris-HCl, pH 8.8. Tris Glycine SDS was used as the running buffer.

PROTEIN STANDARDS, BROAD RANGE, Range 212 kD to 3.4 kD, 750 µL, for 150 mini gel lanes

<u>VWR CAT. NO.</u>	<u>DESCRIPTION</u>	<u>JULE CAT. NO.</u>	<u>UNIT</u>	<u>QTY/ BOX</u>	<u>PRICE</u>
66025-460	Standards, Protein	BRSTD	Vial	1	\$108.00



TBE GELS

TBE Gels provide high resolution of proteins or DNA under non-denaturing conditions. The photo at left shows a typical separation of DNA stained using ethidium bromide. Other fluorescent stains can be used as well. Resolve fragments from 10-3000 base pairs.

TBE/Urea Gels - For analysis of single stranded DNA and RNA size measurement, foot printing, and purification of oligonucleotides used for PCR* and cDNA screening. Resolve fragments from 10-1000 base pairs.

* PCR is a patented process of Hoffman-La Roche. Use of PCR process requires a license.

BUFFER SYSTEM SELECTION

TRIS-GLYCINE GELS - Tris-Glycine Gels (glycine is in the running buffer, but gel buffer is 0.375M Tris-HCl, pH 8.8) can be used for DENATURING or NON-DENATURING samples. If SDS is added to the sample, then the sample becomes denatured. If SDS is not added to the sample, then the gel is used as a NON-DENATURING GEL.

Denaturing gels (0.375M Tris-HCl, pH 8.8) are used for separating proteins that have been exposed to SDS and therefore are in their denatured or unfolded state. These gels allow the proteins to be separated on the basis of size alone. These proteins are no longer "active," since they are unfolded. For flexibility, Jule Tris-Glycine Precast Gels are offered without SDS. Add SDS to the sample and running buffer in order to run these gels as denaturing gels.

Non-denaturing gels (0.375 M, Tris-HCl, pH 8.8) are used for separating proteins in their Native State. Native means any of the following: 1) the structure of a protein as it exists in nature; 2) the structure of a protein as isolated, if it retains enzymatic activity; 3) the form of a protein that has no biological activity but possesses secondary structure. All Jule Precast Gels are offered without SDS. Add SDS to the sample and running buffer in order to run these gels as denaturing gels.

TRICINE GELS - (Gel buffer is 1.0 M Tris-HCl, pH 8.45, 0.1% SDS) are used for separating proteins or peptides as small as 1,000 Daltons (1 kD). Tricine migrates faster than glycine and the smallest proteins, thereby enabling separation. Use Tricine gels in the range of 1,000 to 15,000 Daltons. Tricine gels require different upper and lower running buffers, which are available from VWR.

NON-DENATURING TRIS-BORATE-EDTA (TBE) Gels - TBE GELS are prepared in 0.090M Tris, 0.080M Boric Acid, pH 8.3, 0.0026M EDTA. These gels are used for non-denaturing (native) protein analysis as described at left under non-denaturing Tris-Glycine gels and non-denaturing DNA and RNA analysis (double stranded). The applications for DNA include but are not limited to purification of DNA restriction fragments for cloning, PCR product analysis and purification, and gel mobility shift assays.

DENATURING TBE/UREA GELS - Same as TBE Gels, except Urea (7 molar) is added. These gels are used for single stranded DNA and RNA analysis. The urea that is present in these gels is a denaturing agent that causes the DNA and RNA to become single-stranded by breaking the bonds that usually hold the DNA and RNA together. The applications for this type of gel include: DNA size measurements and Southern Blot Analysis, RNA size measurements and Northern Blot Analysis, DNA footprinting (localizing of protein binding site on DNA or detection of DNA-binding proteins), RNA footprinting (location of site of RNA-binding proteins), and purification of oligonucleotides used for PCR and cDNA screening.

Running & Sample Buffers



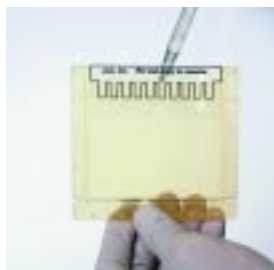
RUNNING AND SAMPLE BUFFERS

(See catalog numbers on back pages)

SNAP-A-GEL EMPTY CASSETTES & COMBS, 8 x 10 cm, for pouring 0.75mm and 1.50mm thick gels.

<u>VWR CAT. NO.</u>	<u>DESCRIPTION</u>	<u>JULE CAT. NO.</u>	<u>UNIT</u>	<u>QTY/BOX</u>	<u>PRICE</u>
66025-442	Cassette, Empty, 0.75mm	P75	1 Box	25	\$ 75.00
66025-444	Cassette, Empty, 1.50mm	P15	1 Box	25	\$ 75.00
66025-447	Comb, 10 well, 0.75mm	75C10	1 Box	25	\$ 30.00
66025-449	Comb, 10 well, 1.50mm	15C10	1 Box	25	\$ 30.00

Empty Snap-A-Gel™ Cassettes



Pour your own gels in leak-tight Snap-A-Gel Empty Cassettes.

JULE GRADIENT FORMERS

MAKE PERFECT LINEAR GRADIENTS IN 2 MINUTES OR LESS!



DUAL PISTON GRADIENT FORMERS

Jule Gradient Formers produce near-perfect linear gradients in less than 2 minutes. They are ideal for pouring polyacrylamide gels or sucrose gradients into centrifuge tubes. The patented dual-piston design keeps the fluid level equal in each chamber during gradient formation regardless of the differences in density or viscosity of the two fluids being mixed. The Jule Gradient Formers make it easy to pour accurate and reproducible gradients. Expect improved separations, especially when two bands are very close in size!

Automatic Mode: The Jule Gradient Former can be operated automatically by connecting it to a peristaltic pump.

- 1) Remove pistons.
- 2) Fill each cylinder with fluids to be mixed.
- 3) Insert pistons, start magnetic stirrer and pump.

As the pump draws liquid out, a vacuum is created within the Gradient Former. The pistons follow the liquid downward, keeping the fluid levels equal in each cylinder, resulting in a near-perfect linear gradient.

Manual Mode:

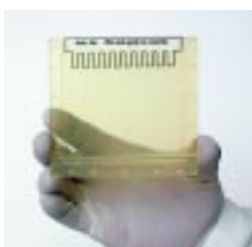
- 1) Remove pistons and fill each cylinder with the fluids to be mixed.
- 2) Insert the pistons, and start the magnetic stirrer.
- 3) Push by hand or use lead screw (models 66025-464 and 66025-466 only) to advance the pistons.

The dual pistons keep the fluid levels equal in each cylinder, thereby forming a near-perfect linear gradient.



VWR CAT. NO.	DESCRIPTION	JULE CAT. NO.	QUANTITY	PRICE
66025-462	Gradient Former, 50 ml	J50	1 each	\$ 360
66025-464	Gradient Former, 17 ml	J17	1 each	\$ 360
66025-466	Gradient Former, 5 ml	J5	1 each	\$ 360

CATALOG NUMBERS FOR JULE MINI SNAP-A-GELS



UNIVERSAL CASSETTES

Gel buffer: 0.375M Tris-HCl, pH 8.8
 Running Buffer: Tris-Glycine
 For SDS or non-SDS application
 Single concentration gels have 4% stack.

MINI TRIS-GLYCINE GELS

ACRYLAMIDE CONCENTRATION	FORMAT	10 Gels / Box - \$95		2 Gels / Box - \$24	
		VWR CAT. NO.	JULE CAT. NO.	VWR CAT. NO.	JULE CAT. NO.
6%	.75 mm, 10 well	14222-340	6W75M10	82001-310	6W75M10T
	.75 mm, 15 well	14222-342	6W75M15	82001-312	6W75M15T
	1.5 mm, 10 well	14222-344	6W15M10	82001-314	6W15M10T
	1.5 mm, 15 well	14222-346	6W15M15	82001-316	6W15M15T
	1.5 mm, 2D well	14222-348	6W15M2	82001-318	6W15M2T
7.5%	.75 mm, 10 well	66025-380	7.5W75M10	82001-320	7.5W75M10T
	1.5 mm, 10 well	66025-392	7.5W15M10	82001-322	7.5W15M10T
8%	.75 mm, 10 well	14222-350	8W75M10	82001-324	8W75M10T
	.75 mm, 15 well	14222-352	8W75M15	82001-326	8W75M15T
	1.5 mm, 10 well	14222-354	8W15M10	82001-328	8W15M10T
	1.5 mm, 15 well	14222-356	8W15M15	82001-330	8W15M15T
	1.5 mm, 2D well	14222-358	8W15M2	82001-332	8W15M2T
10%	.75 mm, 10 well	66025-382	10W75M10	82001-334	10W75M10T
	.75 mm, 15 well	14222-360	10W75M15	82001-338	10W75M15T
	1.5 mm, 10 well	66025-394	10W15M10	82001-336	10W15M10T
	1.5 mm, 15 well	14222-362	10W15M15	82001-340	10W15M15T
	1.5 mm, 2D well	14222-364	10W15M2	82001-342	10W15M2T
12%	.75 mm, 10 well	66025-384	12W75M10	82001-344	12W75M10T
	.75 mm, 15 well	14222-366	12W75M15	82001-346	12W75M15T
	1.5 mm, 10 well	66025-396	12W15M10	82001-348	12W15M10T
	1.5 mm, 15 well	14222-368	12W15M15	82001-350	12W15M15T
	1.5 mm, 2D well	66025-404	12W15M2	82001-352	12W15M2T
14%	.75 mm, 10 well	14222-370	14W75M10	82001-354	14W75M10T
	.75 mm, 15 well	14222-372	14W75M15	82001-356	14W75M15T
	.75 mm, 2D well	14222-374	14W15M2	82001-358	14W15M2T
	1.5 mm, 10 well	14222-376	14W15M10	82001-360	14W15M10T
	1.5 mm, 15 well	14222-378	14W15M15	82001-362	14W15M15T
16%	.75 mm, 10 well	14222-380	16W75M10	82001-364	16W75M10T
	.75 mm, 15 well	14222-382	16W75M15	82001-366	16W75M15T
	.75 mm, 2D well	14222-384	16W15M2	82001-368	16W15M2T
	1.5 mm, 10 well	14222-386	16W15M10	82001-370	16W15M10T
	1.5 mm, 15 well	14222-388	16W15M15	82001-372	16W15M15T
18%	.75 mm, 10 well	14222-390	18W75M10	82001-374	18W75M10T
	.75 mm, 15 well	14222-392	18W75M15	82001-376	18W75M15T
	.75 mm, 2D well	14222-394	18W15M2	82001-378	18W15M2T
	1.5 mm, 10 well	14222-396	18W15M10	82001-380	18W15M10T
	1.5 mm, 15 well	14222-398	18W15M15	82001-382	18W15M15T

MINI TRIS-GLYCINE GELS (Continued)

ACRYLAMIDE CONCENTRATION	FORMAT	10 Gels / Box - \$95		2 Gels / Box - \$24	
		VWR CAT. NO.	JULE CAT. NO.	VWR CAT. NO.	JULE CAT. NO.
4-12%	.75 mm, 10 well	14222-400	412W75M10	82001-384	412W75M10T
	.75 mm, 15 well	14222-402	412W75M15	82001-386	412W75M15T
	1.5 mm, 10 well	14222-404	412W15M10	82001-388	412W15M10T
	1.5 mm, 15 well	14222-406	412W15M15	82001-390	412W15M15T
	1.5 mm, 2D well	14222-408	412W15M2	82001-392	412W15M2T
4-15%	.75 mm, 10 well	66025-387	415W75M10	82001-394	415W75M10T
	1.5 mm, 10 well	66025-398	415W15M10	82001-396	415W15M10T
8-16%	.75 mm, 10 well	14222-410	816W75M10	82001-398	816W75M10T
	.75 mm, 15 well	14222-412	816W75M15	82001-400	816W75M15T
	1.5 mm, 10 well	14222-414	816W15M10	82001-402	816W15M10T
	1.5 mm, 15 well	14222-416	816W15M15	82001-404	816W15M15T
	1.5 mm, 2D well	14222-418	816W15M2	82001-406	816W15M2T
4-20%	.75 mm, 10 well	66025-389	420W75M10	82001-408	420W75M10T
	.75 mm, 15 well	14222-420	420W75M15	82001-410	420W75M15T
	1.5 mm, 10 well	66025-400	420W15M10	82001-412	420W15M10T
	1.5 mm, 15 well	14222-422	420W15M15	82001-414	420W15M15T
	1.5 mm, 2D well	14222-424	420W15M2	82001-416	420W15M2T
10-20%	.75 mm, 10 well	66025-390	1020W75M10	82001-418	1020W75M10T
	1.5 mm, 10 well	66025-402	1020W15M10	82001-420	1020W15M10T
	.75 mm, 15 well	14222-426	1020W75M15	82001-422	1020W75M15T
	.75 mm, 2D well	14222-428	1020W15M2	82001-424	1020W15M2T



MINI TBE GELS

Gel buffer: 0.090M Tris, 0.080M Boric Acid
pH 8.3, 0.0026M EDTA
Running Buffer: TBE

ACRYLAMIDE CONCENTRATION	FORMAT	10 Gels / Box - \$95		2 Gels / Box - \$24	
		VWR CAT. NO.	JULE CAT. NO.	VWR CAT. NO.	JULE CAT. NO.
6%	.75 mm, 10 well	66025-407	6N75M10	82001-426	6N75M10T
	.75 mm, 15 well	14222-430	6N75M15	82001-428	6N75M15T
	1.5 mm, 15 well	82001-430	6N15M15	82001-432	6N15M15T
8%	.75 mm, 10 well	66025-409	8N75M10	82001-434	8N75M10T
	.75 mm, 15 well	14222-432	8N75M15	82001-436	8N75M15T
	1.5 mm, 15 well	82001-438	8N15M15	82001-440	8N15M15T
10%	.75 mm, 10 well	14222-434	10N75M10	82001-442	10N75M10T
	.75 mm, 15 well	14222-436	10N75M15	82001-444	10N75M15T
	1.5 mm, 15 well	82001-446	10N15M15		
20%	.75 mm, 10 well	14222-438	20N75M10	82001-448	20N75M10T
	.75 mm, 15 well	14222-440	20N75M15	82001-450	20N75M15T
4-12%	.75 mm, 10 well	14222-442	412N75M10	82001-452	412N75M10T
	.75 mm, 15 well	14222-444	412N75M15	82001-454	412N75M15T
4-20%	.75 mm, 10 well	14222-446	420N75M10	82001-456	420N75M10T
	.75 mm, 15 well	14222-448	420N75M15	82001-458	420N75M15T

To order, call VWR at 1-800-932-5000 or visit www.vwr.com

For technical information visit Jule, Inc. at www.precastgels.com

MINI TBE UREA GELS



Gel buffer: 0.090M Tris, 0.080M Boric Acid, pH 8.3
0.0026M EDTA, 7 Molar Urea
Running Buffer: TBE

ACRYLAMIDE CONCENTRATION	FORMAT	10 Gels / Box - \$95		2 Gels / Box - \$24	
		VWR CAT. NO.	JULE CAT. NO.	VWR CAT. NO.	JULE CAT. NO.
6%	.75 mm, 10 well	14222-450	6U75M10	82001-460	6U75M10T
	.75 mm, 15 well	14222-452	6U75M15	82001-462	6U75M15T
	1.5 mm, 2D well	14222-454	6U15M2	82001-464	6U15M2T
8%	.75 mm, 10 well	66025-412	8U75M10	82001-466	8U75M10T
10%	.75 mm, 10 well	14222-456	10U75M10	82001-468	10U75M10T
	.75 mm, 15 well	14222-458	10U75M15	82001-470	10U75M15T
	1.5 mm, 2D well	14222-460	10U15M2	82001-472	10U15M2T
15%	.75 mm, 10 well	14222-462	15U75M10	82001-474	15U75M10T
	.75 mm, 15 well	14222-464	15U75M15	82001-476	15U75M15T
	1.5 mm, 2D well	14222-466	15U15M2	82001-478	15U15M2T

MINI TRICINE GELS



Gel buffer: 1.0M Tris-HCl, pH 8.45, 0.1% SDS
Running Buffer: Tris-Tricine-SDS in upper chamber
Tris-HCl in lower chamber
Single concentration gels have 4% stack.

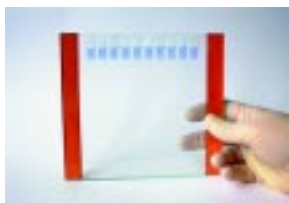
ACRYLAMIDE CONCENTRATION	FORMAT	10 Gels / Box - \$95		2 Gels / Box - \$24	
		VWR CAT. NO.	JULE CAT. NO.	VWR CAT. NO.	JULE CAT. NO.
10%	.75 mm, 10 well	14222-468	10T75M10	82001-480	10T75M10T
	.75 mm, 15 well	14222-470	10T75M15	82001-482	10T75M15T
	.75 mm, 2D well	14222-472	10T15M2	82001-484	10T15M2T
16%	.75 mm, 10 well	14222-474	16T75M10	82001-486	16T75M10T
	.75 mm, 15 well	14222-476	16T75M15	82001-488	16T75M15T
	.75 mm, 2D well	14222-478	16T15M2	82001-490	16T15M2T
10-20%	.75 mm, 10 well	14222-480	1020T75M10	82001-492	1020T75M10T
	.75 mm, 15 well	14222-482	1020T75M15	82001-494	1020T75M15T
	.75 mm, 2D well	14222-484	1020T15M2	82001-496	1020T15M2T

SAMPLE WELL CAPACITIES

Mini Gels			
Gel Thickness	Sample Wells	Total Well Volume (microliters)	Recommended Sample Load (microliters)
.75mm	10	25	2-15
	15	18	2-10
1.50mm	10	50	3-30
	15	37	3-20

Large Gels			
Gel Thickness	Sample Wells	Total Well Volume (micro liters)	Recommended Sample Load (micro liters)
.75mm	10	150	10-140
	15	80	10-65
1.50mm	10	320	10-300
	15	220	10-190

Large Gels for Hoefer SE400, SE600, Ruby SE600, SE650 & SE750



Gel buffer: 0.375M Tris-HCl, pH 8.8
 Running Buffer: Tris-Glycine
 For SDS or non-SDS application
 Includes 4% stacking gel (except 2D gels)



LARGE TRIS-GLYCINE GELS

Cassette size: 16 cm tall x 18 cm wide

ACRYLAMIDE CONCENTRATION	FORMAT	6 Gels / Box - \$170		2 Gels / Box - \$64	
		VWR CAT. NO.	JULE CAT. NO.	VWR CAT. NO.	JULE CAT. NO.
6%	.75mm, 10 well	82001-686	6W75HL10	82001-504	6W75HL10T
	.75mm, 15 well	82001-688	6W75HL15	82001-506	6W75HL15T
	1.5mm, 10 well	82001-690	6W15HL10	82001-508	6W15HL10T
	1.5mm, 15 well	82001-692	6W15HL15	82001-510	6W15HL15T
	1.5mm, 2D well	82001-694	6W15HL2	82001-512	6W15HL2T
7.5%	.75mm, 10 well	82001-696	7.5W75HL10	82001-514	7.5W75HL10T
	1.5mm, 10 well	66025-414	7.5W15HL10	82002-888	7.5W15HL10T
8%	.75mm, 10 well	82001-700	8W75HL10	82001-518	8W75HL10T
	.75mm, 15 well	82001-702	8W75HL15	82001-520	8W75HL15T
	1.5mm, 10 well	82001-704	8W15HL10	82001-522	8W15HL10T
	1.5mm, 15 well	82001-706	8W15HL15	82001-524	8W15HL15T
	1.5mm, 2D well	82001-708	8W15HL2	82001-526	8W15HL2T
10%	.75mm, 10 well	82001-710	10W75HL10	82001-528	10W75HL10T
	1.5mm, 10 well	66025-416	10W15HL10	82002-890	10W15HL10T
	.75mm, 15 well	82001-714	10W75HL15	82001-532	10W75HL15T
	1.5mm, 15 well	82001-716	10W15HL15	82001-534	10W15HL15T
	1.5mm, 2D well	82001-718	10W15HL2	82001-536	10W15HL2T
12%	.75mm, 10 well	82001-720	12W75HL10	82001-538	12W75HL10T
	.75mm, 15 well	82001-722	12W75HL15	82001-540	12W75HL15T
	1.5mm, 10 well	66025-418	12W15HL10	82002-892	12W15HL10T
	1.5mm, 15 well	82001-726	12W15HL15	82001-544	12W15HL15T
	1.5mm, 2D well	66025-426	12W15HL2	82002-894	12W15HL2T
14%	.75mm, 10 well	82001-730	14W75HL10	82001-548	14W75HL10T
	.75mm, 15 well	82001-732	14W75HL15	82001-550	14W75HL15T
	1.5mm, 2D well	82001-734	14W15HL2	82001-552	14W15HL2T
	1.5mm, 10 well	82001-736	14W15HL10	82001-554	14W15HL10T
	1.5mm, 15 well	82001-738	14W15HL15	82001-556	14W15HL15T
16%	.75mm, 10 well	82001-740	16W75HL10	82001-558	16W75HL10T
	.75mm, 15 well	82001-742	16W75HL15	82001-560	16W75HL15T
	1.5mm, 2D well	82001-744	16W15HL2	82001-562	16W15HL2T
	1.5mm, 10 well	82001-746	16W15HL10	82001-564	16W15HL10T
	1.5mm, 15 well	82001-748	16W15HL15	82001-566	16W15HL15T
18%	.75mm, 10 well	82001-750	18W75HL10	82001-568	18W75HL10T
	.75mm, 15 well	82001-752	18W75HL15	82001-570	18W75HL15T
	1.5mm, 2D well	82001-754	18W15HL2	82001-572	18W15HL2T
	1.5mm, 10 well	82001-756	18W15HL10	82001-574	18W15HL10T
	1.5mm, 15 well	82001-758	18W15HL15	82001-576	18W15HL15T

To order, call VWR at 1-800-932-5000 or visit www.vwr.com

For technical information visit Jule, Inc. at www.precastgels.com

Large Gels for Hoefer SE400, SE600, Ruby SE600, SE650 & SE750 (continued)

LARGE TRIS-GLYCINE GELS (Continued)

ACRYLAMIDE CONCENTRATION	FORMAT	6 Gels / Box - \$170		2 Gels / Box - \$64	
		VWR CAT. NO.	JULE CAT. NO.	VWR CAT. NO.	JULE CAT. NO.
4-12%	.75mm, 10 well	82001-760	412W75HL10	82001-578	412W75HL10T
	.75mm, 15 well	82001-762	412W75HL15	82001-580	412W75HL15T
	1.5mm, 10 well	82001-764	412W15HL10	82001-582	412W15HL10T
	1.5mm, 15 well	82001-766	412W15HL15	82001-584	412W15HL15T
	1.5mm, 2D well	82001-768	412W15HL2	82001-586	412W15HL2T
4-15%	.75mm, 10 well	82001-770	415W75HL10	82001-588	415W75HL10T
	1.5mm, 10 well	66025-420	415W15HL10	82002-896	415W15HL10T
8-16%	.75mm, 10 well	82001-774	816W75HL10	82001-592	816W75HL10T
	.75mm, 15 well	82001-776	816W75HL15	82001-594	816W75HL15T
	1.5mm, 10 well	82001-778	816W15HL10	82001-596	816W15HL10T
	1.5mm, 15 well	82001-780	816W15HL15	82001-598	816W15HL15T
	1.5mm, 2D well	82001-782	816W15HL2	82001-600	816W15HL2T
4-20%	.75mm, 10 well	82001-784	420W75HL10	82001-602	420W75HL10T
	.75mm, 15 well	82001-786	420W75HL15	82001-604	420W75HL15T
	1.5mm, 10 well	82001-788	420W15HL10	82002-898	420W15HL10T
	1.5mm, 15 well	82001-790	420W15HL15	82001-608	420W15HL15T
	1.5mm, 2D well	82001-792	420W15HL2	82001-610	420W15HL2T
10-20%	.75mm, 10 well	82001-794	1020W75HL10	82001-612	1020W75HL10T
	1.5mm, 10 well	66025-424	1020W15HL10	82002-900	1020W15HL10T
	.75mm, 15 well	82001-798	1020W75HL15	82001-616	1020W75HL15T
	1.5mm, 2D well	82001-800	1020W15HL2	82001-618	1020W15HL2T

LARGE TBE GELS



Gel buffer: 0.090M Tris, 0.080M Boric Acid, pH 8.3
0.0026M EDTA
Running Buffer: TBE

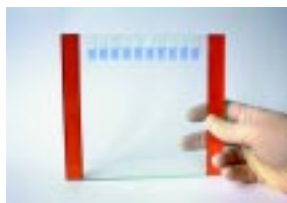
Cassette size: 16 cm tall x 18 cm wide

ACRYLAMIDE CONCENTRATION	FORMAT	6 Gels / Box - \$170		2 Gels / Box - \$64	
		VWR CAT. NO.	JULE CAT. NO.	VWR CAT. NO.	JULE CAT. NO.
6%	.75mm, 10 well	82001-802	6N75HL10	82001-620	6N75HL10T
	.75mm, 15 well	82001-804	6N75HL15	82001-622	6N75HL15T
	1.5mm, 15 well	82001-806	6N15HL15	82001-624	6N15HL15T
8%	.75mm, 10 well	82001-808	8N75HL10	82001-626	8N75HL10T
	.75mm, 15 well	82001-810	8N75HL15	82001-628	8N75HL15T
	1.5mm, 15 well	82001-812	8N15HL15	82001-630	8N15HL15T
10%	.75mm, 10 well	82001-814	10N75HL10	82001-632	10N75HL10T
	.75mm, 15 well	82001-816	10N75HL15	82001-634	10N75HL15T
20%	.75mm, 10 well	82001-818	20N75HL10	82001-636	20N75HL10T
	.75mm, 15 well	82001-820	20N75HL15	82001-638	20N75HL15T
4-12%	.75mm, 10 well	82001-822	412N75HL10	82001-640	412N75HL10T
	.75mm, 15 well	82001-824	412N75HL15	82001-642	412N75HL15T
4-20%	.75mm, 10 well	82001-826	420N75HL10	82001-644	420N75HL10T
	.75mm, 15 well	82001-828	420N75HL15	82001-646	420N75HL15T

For technical information visit Jule, Inc. at www.precastgels.com

To order, call VWR at 1-800-932-5000 or visit www.vwr.com

Large Gels for Hoefer SE400, SE600, Ruby SE600, SE650 & SE750 (continued)



Gel buffer: 0.090M Tris, 0.080M Boric Acid, pH 8.3
0.0026M EDTA, 7 Molar Urea
Running Buffer: TBE

LARGE TBE-UREA GELS

Cassette size: 16 cm tall x 18 cm wide

ACRYLAMIDE CONCENTRATION	FORMAT	VWR CAT. NO.	JULE CAT. NO.	VWR CAT. NO.	JULE CAT. NO.
6%	.75mm, 10 well	82001-830	6U75HL10	82001-648	6U75HL10T
	.75mm, 15 well	82001-832	6U75HL15	82001-650	6U75HL15T
	1.5mm, 2D well	82001-834	6U15HL2	82001-652	6U15HL2T
8%	.75mm, 10 well	82001-836	8U75HL10	82001-654	8U75HL10T
10%	.75mm, 10 well	82001-838	10U75HL10	82001-656	10U75HL10T
	.75mm, 15 well	82001-840	10U75HL15	82001-658	10U75HL15T
	1.5mm, 2D well	82001-842	10U15HL2	82001-660	10U15HL2T
15%	.75mm, 10 well	82001-844	15U75HL10	82001-662	15U75HL10T
	.75mm, 15 well	82001-846	15U75HL15	82001-664	15U75HL15T
	1.5mm, 2D well	82001-848	15U15HL2	82001-666	15U15HL2T



Gel buffer: 1.0M Tris-HCl, pH 8.45, 0.1% SDS
Running Buffer: Tris-Tricine-SDS in upper chamber
Tris-HCl in lower chamber
Includes 4% stacking gel (except 2D gels)

LARGE TRICINE GELS

Cassette size: 16 cm tall x 18 cm wide

ACRYLAMIDE CONCENTRATION	FORMAT	6 Gels / Box - \$170		2 Gels / Box - \$64	
		VWR CAT. NO.	JULE CAT. NO.	VWR CAT. NO.	JULE CAT. NO.
10%	.75mm, 10 well	82001-850	10T75HL10	82001-668	10T75HL10T
	.75mm, 15 well	82001-852	10T75HL15	82001-670	10T75HL15T
	1.5mm, 2D well	82001-854	10T15HL2	82001-672	10T15HL2T
16%	.75mm, 10 well	82001-856	16T75HL10	82001-674	16T75HL10T
	.75mm, 15 well	82001-858	16T75HL15	82001-676	16T75HL15T
	1.5mm, 2D well	82001-860	16T15HL2	82001-678	16T15HL2T
10-20%	.75mm, 10 well	82001-862	1020T75HL10	82001-680	1020T75HL10T
	.75mm, 15 well	82001-864	1020T75HL15	82001-682	1020T75HL15T
	1.5mm, 2D well	82001-866	1020T15HL2	82001-684	1020T15HL2T

Large Size Gels for the BioRad Protean II and Iixi



Gel buffer: 0.375M Tris-HCl, pH 8.8
 Use Tris-Glycine Running Buffer
 For SDS or non-SDS application
 Includes 4% stacking gel (except 2D gels)



LARGE TRIS-GLYCINE GELS

Cassette size: 16 x 20cm wide front plate
 18.3 x 20cm wide back plate

ACRYLAMIDE CONCENTRATION	FORMAT	6 Gels / Box - \$170		2 Gels / Box - \$64	
		VWR CAT. NO.	JULE CAT. NO.	VWR CAT. NO.	JULE CAT. NO.
6%	.75mm, 10 well	82002-050	6W75BL10	82001-868	6W75BL10T
	.75mm, 15 well	82002-052	6W75BL15	82001-870	6W75BL15T
	1.5mm, 10 well	82002-054	6W15BL10	82001-872	6W15BL10T
	1.5mm, 15 well	82002-056	6W15BL15	82001-874	6W15BL15T
	1.5mm, 2D well	82002-058	6W15BL2	82001-876	6W15BL2T
7.5%	.75mm, 10 well	82002-060	7.5W75BL10	82001-878	7.5W75BL10T
	1.5mm, 10 well	82002-062	7.5W15BL10	82002-902	7.5W15BL10T
8%	.75mm, 10 well	82002-064	8W75BL10	82001-882	8W75BL10T
	.75mm, 15 well	82002-066	8W75BL15	82001-884	8W75BL15T
	1.5mm, 10 well	82002-068	8W15BL10	82001-886	8W15BL10T
	1.5mm, 15 well	82002-070	8W15BL15	82001-888	8W15BL15T
	1.5mm, 2D well	82002-072	8W15BL2	82001-890	8W15BL2T
10%	.75mm, 10 well	82002-074	10W75BL10	82001-892	10W75BL10T
	1.5mm, 10 well	82002-076	10W15BL10	82002-904	10W15BL10T
	.75mm, 15 well	82002-078	10W75BL15	82001-896	10W75BL15T
	1.5mm, 15 well	82002-080	10W15BL15	82001-898	10W15BL15T
	1.5mm, 2D well	82002-082	10W15BL2	82001-900	10W15BL2T
12%	.75mm, 10 well	82002-084	12W75BL10	82001-902	12W75BL10T
	.75mm, 15 well	82002-086	12W75BL15	82001-904	12W75BL15T
	1.5mm, 10 well	66025-432	12W15BL10	82002-906	12W15BL10T
	1.5mm, 15 well	82002-090	12W15BL15	82001-908	12W15BL15T
	1.5mm, 2D well	82002-092	12W15BL2	82002-908	12W15BL2T
14%	.75mm, 10 well	82002-094	14W75BL10	82001-912	14W75BL10T
	.75mm, 15 well	82002-096	14W75BL15	82001-914	14W75BL15T
	1.5mm, 2D well	82002-098	14W15BL2	82001-916	14W15BL2T
	1.5mm, 10 well	82002-100	14W15BL10	82001-918	14W15BL10T
	1.5mm, 15 well	82002-102	14W15BL15	82001-920	14W15BL15T
16%	.75mm, 10 well	82002-104	16W75BL10	82001-922	16W75BL10T
	.75mm, 15 well	82002-106	16W75BL15	82001-924	16W75BL15T
	1.5mm, 2D well	82002-108	16W15BL2	82001-926	16W15BL2T
	1.5mm, 10 well	82002-110	16W15BL10	82001-928	16W15BL10T
	1.5mm, 15 well	82002-112	16W15BL15	82001-930	16W15BL15T
18%	.75mm, 10 well	82002-114	18W75BL10	82001-932	18W75BL10T
	.75mm, 15 well	82002-116	18W75BL15	82001-934	18W75BL15T
	1.5mm, 2D well	82002-118	18W15BL2	82001-936	18W15BL2T
	1.5mm, 10 well	82002-120	18W15BL10	82001-938	18W15BL10T
	1.5mm, 15 well	82002-122	18W15BL15	82001-940	18W15BL15T

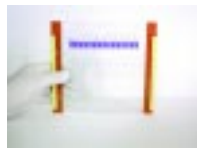
Large Size Gels for the BioRad Protean II and Iixi

LARGE TRIS-GLYCINE GELS (Continued)

ACRYLAMIDE CONCENTRATION	FORMAT	6 Gels / Box - \$170		2 Gels / Box - \$64	
		VWR CAT. NO.	JULE CAT. NO.	VWR CAT. NO.	JULE CAT. NO.
4-12%	.75mm, 10 well	82002-124	412W75BL10	82001-942	412W75BL10T
	.75mm, 15 well	82002-126	412W75BL15	82001-944	412W75BL15T
	1.5mm, 10 well	82002-128	412W15BL10	82001-946	412W15BL10T
	1.5mm, 15 well	82002-130	412W15BL15	82001-948	412W15BL15T
	1.5mm, 2D well	82002-132	412W15BL2	82001-950	412W15BL2T
4-15%	.75mm, 10 well	82002-134	415W75BL10	82001-952	415W75BL10T
	1.5mm, 10 well	66025-434	415W15BL10	82002-910	415W15BL10T
8-16%	.75mm, 10 well	82002-138	816W75BL10	82001-956	816W75BL10T
	.75mm, 15 well	82002-140	816W75BL15	82001-958	816W75BL15T
	1.5mm, 10 well	82002-142	816W15BL10	82001-960	816W15BL10T
	1.5mm, 15 well	82002-144	816W15BL15	82001-962	816W15BL15T
	1.5mm, 2D well	82002-146	816W15BL2	82001-964	816W15BL2T
4-20%	.75mm, 10 well	82002-148	420W75BL10	82001-966	420W75BL10T
	.75mm, 15 well	82002-150	420W75BL15	82001-968	420W75BL15T
	1.5mm, 10 well	82002-152	420W15BL10	82002-912	420W15BL10T
	1.5mm, 15 well	82002-154	420W15BL15	82001-972	420W15BL15T
	1.5mm, 2D well	82002-156	420W15BL2	82001-974	420W15BL2T
10-20%	.75mm, 10 well	82002-158	1020W75BL10	82001-976	1020W75BL10T
	1.5mm, 10 well	82002-160	1020W15BL10	82002-914	1020W15BL10T
	.75mm, 15 well	82002-162	1020W75BL15	82001-980	1020W75BL15T
	1.5mm, 2D well	82002-164	1020W15BL2	82001-982	1020W15BL2T

LARGE TBE GELS

Cassette size: 16 x 20cm wide front plate
18.3 x 20cm wide back plate



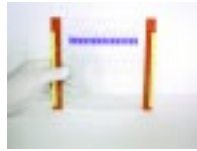
Gel buffer: 0.090M Tris, 0.080M Boric Acid, pH 8.3
0.0026M EDTA
Running Buffer: TBE

ACRYLAMIDE CONCENTRATION	FORMAT	6 Gels / Box - \$170		2 Gels / Box - \$64	
		VWR CAT. NO.	JULE CAT. NO.	VWR CAT. NO.	JULE CAT. NO.
6%	.75mm, 10 well	82002-166	6N75BL10	82001-984	6N75BL10T
	.75mm, 15 well	82002-168	6N75BL15	82001-986	6N75BL15T
	1.5mm, 15 well	82002-170	6N15BL15	82001-988	6N15BL15T
8%	.75mm, 10 well	82002-172	8N75BL10	82001-990	8N75BL10T
	.75mm, 15 well	82002-174	8N75BL15	82001-992	8N75BL15T
	1.5mm, 15 well	82002-176	8N15BL15	82001-994	8N15BL15T
10%	.75mm, 10 well	82002-178	10N75BL10	82001-996	10N75BL10T
	.75mm, 15 well	82002-180	10N75BL15	82001-998	10N75BL15T
20%	.75mm, 10 well	82002-182	20N75BL10	82002-000	20N75BL10T
	.75mm, 15 well	82002-184	20N75BL15	82002-002	20N75BL15T
4-12%	.75mm, 10 well	82002-186	412N75BL10	82002-004	412N75BL10T
	.75mm, 15 well	82002-188	412N75BL15	82002-006	412N75BL15T
4-20%	.75mm, 10 well	82002-190	420N75BL10	82002-008	420N75BL10T
	.75mm, 15 well	82002-192	420N75BL15	82002-010	420N75BL15T

To order, call VWR at 1-800-932-5000 or visit www.vwr.com

For technical information visit Jule, Inc. at www.precastgels.com

Large Size Gels for the BioRad Protean II and Ixi



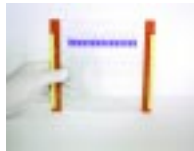
Gel buffer: 0.090M Tris, 0.080M Boric Acid, pH 8.3
0.0026M EDTA, 7 Molar Urea
Running Buffer: TBE

LARGE TBE-UREA GELS

ACRYLAMIDE CONCENTRATION	FORMAT	6 Gels / Box - \$170		2 Gels / Box - \$64	
		VWR CAT. NO.	JULE CAT. NO.	VWR CAT. NO.	JULE CAT. NO.
6%	.75mm, 10 well	82002-194	6U75BL10	82002-012	6U75BL10T
	.75mm, 15 well	82002-196	6U75BL15	82002-014	6U75BL15T
	1.5mm, 2D well	82002-198	6U15BL2	82002-016	6U15BL2T
8%	.75mm, 10 well	82002-200	8U75BL10	82002-018	8U75BL10T
10%	.75mm, 10 well	82002-202	10U75BL10	82002-020	10U75BL10T
	.75mm, 15 well	82002-204	10U75BL15	82002-022	10U75BL15T
	1.5mm, 2D well	82002-206	10U15BL2	82002-024	10U15BL2T
15%	.75mm, 10 well	82002-208	15U75BL10	82002-026	15U75BL10T
	.75mm, 15 well	82002-210	15U75BL15	82002-028	15U75BL15T
	1.5mm, 15 well	82002-212	15U15BL2	82002-030	15U15BL2T

LARGE TRICINE GELS

Cassette size: 16 x 20cm wide front plate
18.3 x 20cm wide back plate



Gel buffer: 1.0M Tris-HCl, pH 8.45, 0.1% SDS
Running Buffer: Tris-Tricine-SDS in upper chamber
Tris-HCl in lower chamber
Single concentration gels have a 4% stack

ACRYLAMIDE CONCENTRATION	FORMAT	6 Gels / Box - \$170		2 Gels / Box - \$64	
		VWR CAT. NO.	JULE CAT. NO.	VWR CAT. NO.	JULE CAT. NO.
10%	.75mm, 10 well	82002-214	10T75BL10	82002-032	10T75BL10T
	.75mm, 15 well	82002-216	10T75BL15	82002-034	10T75BL15T
	1.5mm, 2D well	82002-218	10T15BL2	82002-036	10T15BL2T
16%	.75mm, 10 well	82002-220	16T75BL10	82002-038	16T75BL10T
	.75mm, 15 well	82002-222	16T75BL15	82002-040	16T75BL15T
	1.5mm, 2D well	82002-224	16T15BL2	82002-042	16T15BL2T
10-20%	.75mm, 10 well	82002-226	1020T75BL10	82002-044	1020T75BL10T
	.75mm, 15 well	82002-228	1020T75BL15	82002-046	1020T75BL15T
	1.5mm, 2D well	82002-230	1020T15BL2	82002-048	1020T15BL2T

BUFFERS

TRIS GLYCINE RUNNING BUFFERS		VWR CAT. NO.	JULE CAT. NO.	Price
Tris-Glycine-SDS	10x, 1 LITER	66025-450	TGSRB10X	\$27
Tris-Glycine	10x, 1 LITER	66025-452	TGNRB10X	\$27

TBE RUNNING BUFFER (For TBE and Urea Gels)

TBE	10x, 1 LITER	66025-454	TBERB10X	\$35
-----	--------------	-----------	----------	------

TRIS TRICINE RUNNING BUFFERS

Lower Running Buffer	5x, 1 LITER	82001-498	TTLB5X	\$27
Upper Running Buffer	5x, 1 LITER	82001-500	TTUB5X	\$75

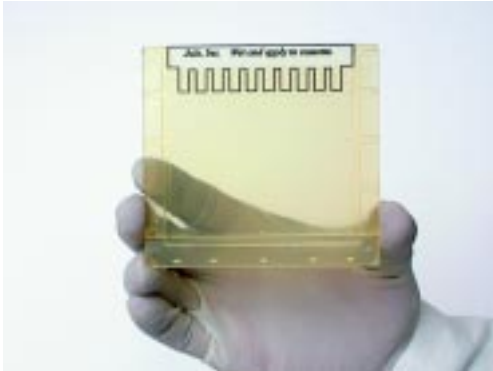
SAMPLE BUFFERS

Tris-HCl, SDS	2x, 20 ml	66025-456	TGSB2XR	\$25
Tris-HCl, Native	2x, 20 ml	66025-458	TGNSB2X	\$25
Tris-Tricine, SDS	2x, 20 ml	82001-502	TTSB2XR	\$25
TBE	2x, 20 ml	82002-916	TBESB2X	\$25

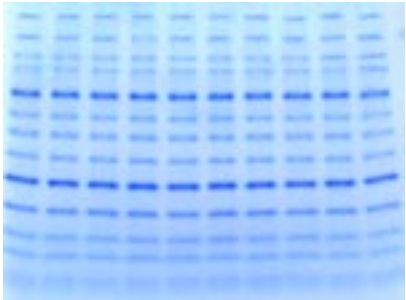


For technical information visit Jule, Inc. at www.precastgels.com To order, call VWR at 1-800-932-5000 or visit www.vwr.com

Save Time!



Get Results!



vwr.com
1.800.932.5000

Order from Over 400,000 Products

Sales & Inventory Locations

Pacific

Northwest
 Anchorage, AK
 Boise, ID
 Brisbane, CA
 Seattle, WA
 Tualatin, OR

Southwest

Albuquerque, NM
 Aurora, CO
 Phoenix, AZ
 San Diego, CA
 San Dimas, CA

Midwest

Batavia, IL
 Indianapolis, IN
 Minneapolis, MN
 St. Louis, MO

Gulf

Houston, TX
 Lake Charles, LA
 Sugarland, TX

Northeast

Marlborough, MA
 Rochester, NY

Mid-Atlantic

Bridgeport, NJ
 Clarksburg, MD
Southeast
 Miami, FL
 Morrisville, NC
 Oak Ridge, TN
 Suwanee, GA

Canada

Mississauga, Ontario
 Ville Mont-Royal,
 Québec

Call Direct for Specialized Service Locations

International

911 Commerce Ct.
 Buffalo Grove, IL 60089
 847-520-6170
 fax: 847-229-0788

Puerto Rico

Carr. #869, Km. 1.5 M-4
 Royal Industrial Park
 Catano, PR 00962
 800-932-5000
 787-275-4500
 fax: 787-788-4320

Global and

Corporate Accounts

1310 Goshen Pkwy.
 West Chester, PA 19380
 610-431-1700
 fax: 610-431-9174

Production Supplies and Services

975 Overland Ct.
 San Dimas, CA 91773
 877-VWR-PSCS
 (877-897-7727)
 fax: 888-890-9124

Furniture Division

3021 Gateway Drive
 Suite 280
 Irving, TX 75063
 888-624-2432
 fax: 972-753-1389

VWR Laboratory Distributors Services

911 Commerce Ct.
 Buffalo Grove, IL 60089
 800-873-8971
 fax: 847-229-0668

Prices are current at time of printing and are subject to change without notice. Note: Availability for certain products may be limited by federal, state, provincial, or local licensing requirements. All prices printed are in U.S. dollars.

